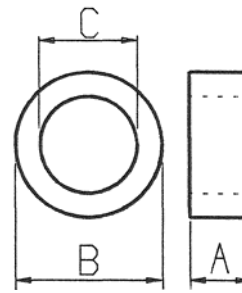


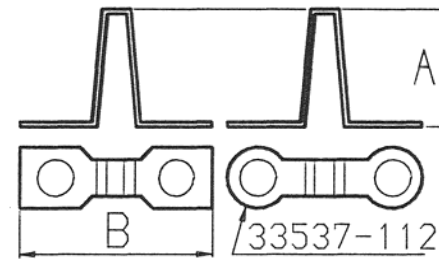
DEI CODE No.	W.B. Part No.	A	B	C
36161-506-0	WB/1193/24	.10(2.5)	.23(5.8) DIA	.13(3.3)
36161-507-0	WB/1193/25	.15(3.8)		
36162-301-0	H/WB/1110/25	.10(2.5)	.25(6.4) DIA	.12(3.0) DIA
36162-302-0	H/WB/1110/24	.15(3.8)		
36162-502-0	H/WB/1114/23	.10(2.5)	.25(6.4)	.15(3.8)
36162-503-0	H/WB/1114/22	.15(3.8)		



NOTES

- Material**
Brass.
- Finish**
Dull nickel plate.

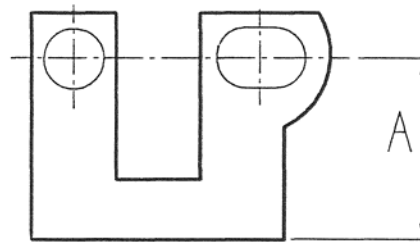
DEI CODE No.	W.B. Part No.	A	B
33537-102-0	H/WB/1110/60	.56(14.2)	.75(19.1)
33537-103-0	H/WB/1114/61	.56(14.2)	.85(21.6)
33537-104-0	WB/1146/81	.58(14.7)	.75(19.1)
33537-112-0	-----	.57(14.5)	.66(16.8)
77537-109-0	H/WB/1193/60	.56(14.2)	.55(14.0)
33537-105-0	WB/UN/1747/D	.56(14.2)	.75(19.1)



NOTES

- Material**
Copper.
- Finish**
33537-105 electro tin, remainder dull nickel plate.

DEI CODE No.	W.B. Part No.	R/HAND L/HAND	A
33538-101-0	H/WB/1110/84R	R/HAND	.47(11.9)
33538-105-0	H/WB/1110/84L	L/HAND	
33538-102-0	H/WB/1146/86R	R/HAND	.44(11.2)
33538-106-0	H/WB/1146/86L	L/HAND	
33538-104-0	H/WB/1114/84R	R/HAND	.61(15.5)
33538-103-0	H/WB/1114/84L	L/HAND	



NOTES

- Material**
Copper.
- Finish**
Dull nickel plate.

GENERAL NOTES:

1. Ordering Accessories

Accessories should be ordered by the DEI code number, but the WB part number may be used where applicable.

2. Dimensions

All dimensions are nominal unless otherwise stated and are in inches (millimetres)

3. For used on details refer to sheet two.

DEI CODE NO.	WB PART NO.	USED ON TERMINAL BLOCK OUTLINE DRAWING																									
		72141/S1110	72141/S1114	72141/S1148	72143/S1169	72144/D1110	72144/D1114	72146/D1169	72441/S1110	72441/S1148	72441/S1736	72444/D1110	72444/D1736	72541/S1114	72541/S1146	72541/S1147	72541/S1176	72542/S1173	72542/S1182	72542/S1734	72543/S1169	72544/D1114	72544/D1146	72546/D1169	72581/S1146	72841/S1161	
SPACERS																											
36161-506-0	WB/1193/24	X		X		X			X	X	X	X	X														
36161-507-0	WB/1193/25	X		X		X			X	X	X	X	X														
36162-301-0	H/WB/1110/25	X		X		X			X	X		X															
36162-302-0	H/WB/1114/24	X		X		X			X	X		X															
36162-502-0	H/WB/1114/25	X		X		X			X	X		X		X	X	X	X	X	X	X	X	X	X	X	X	X	X
36162-503-0	H/WB/1114/22	X		X		X			X	X		X		X	X	X	X	X	X	X	X	X	X	X	X	X	X
TRANSVERSE LINK																											
33537-102-0	H/WB/1110/60					X						X															
33537-103-0	H/WB/1110/61						X	X														X			X		
33537-104-0	WB/1146/81					X						X											X				
33537-105-0	WB/UN/1747/D					X						X										X					
33537-112-0	-----					X						X										X					
77537-109-0	H/WB/1193/60												X														
EARTH LINK																											
33538-101-0	H/WB/1110/89R	X		X		X			X	X		X															
33538-105-0	H/WB/1110/84L	X		X		X			X	X		X															
33538-102-0	H/WB/1146/86R	X		X		X			X	X		X		X*			X						X		X		
33538-106-0	H/WB/1146/86L	X		X		X			X	X		X		X*			X						X		X		
33538-104-0	H/WB/1114/84R		X		X		X	X						X								X	X		X		
33538-103-0	H/WB/1114/84L		X		X		X	X						X								X	X		X		

* These Earth Links can only be used on the Terminal Blocks 72541-021 to 132-0. (Single row, in-line feet.)

